

P002

▪ **Air conditioning disconnect.**

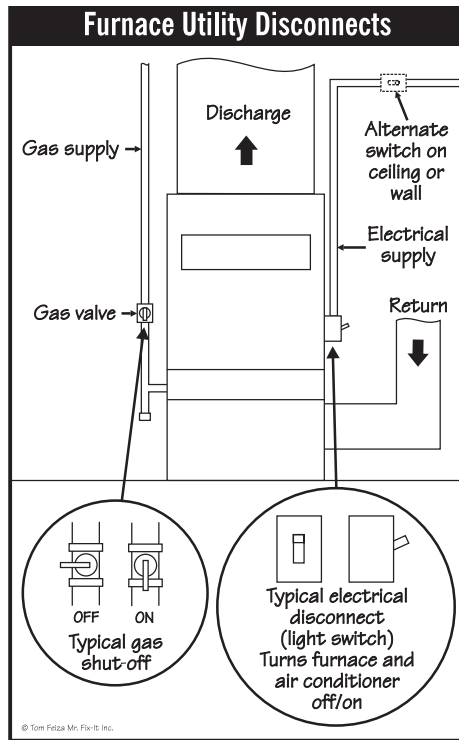
This 240 Volt switch will be located next to the exterior part of the air conditioning system. (see Drawing A004)

▪ **Emergency phone numbers.**

Keep a list of how to reach the fire department, ambulance/rescue, police, Mom, Dad, relatives, workplace(s), and others appropriate to your household.

▪ **Fire extinguishers.** Place fire extinguishers in your kitchen, garage and basement. Make sure everyone knows how to use them.

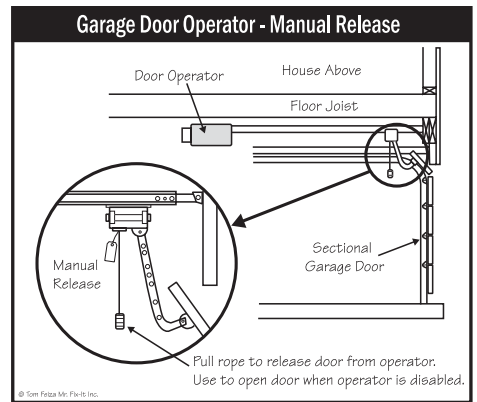
▪ **Emergency release for garage door.** The automatic garage door opener has an emergency release so you can open the door when there is a power failure. Show everyone how it operates. Do this with the door down, because a poorly balanced door may crash to the ground. The release is located where the door attaches to the opener track. Pull the handle to release it—remember,



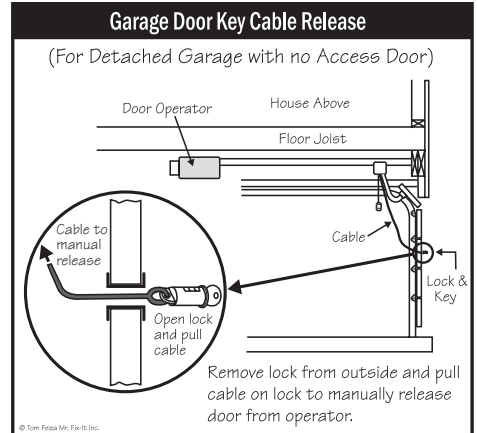
H003

do this with the door down—and then lift the door. (See Drawing M015)

▪ **Emergency release for garage door—with a key (when there is no service door to the garage).** In this situation, to release the garage door opener when the power is out, you



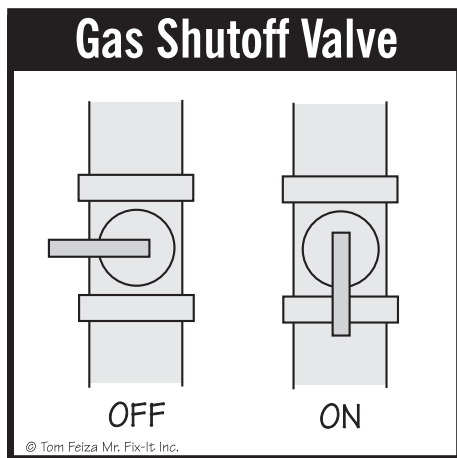
M015



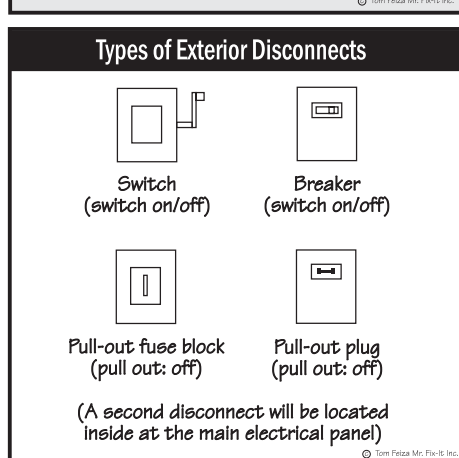
M018

must open a special lock and remove a cable. You'll find a circular lock near the top center of the garage door. Open this lock and pull the attached cable out through the opening. Doing this will release the opener from the garage door so you can open the door manually. Always remember that the door should be down before you test the release. (See Drawing M018)

Written by Tom Feiza – Mr. Fix-It. See Tom's book How To Operate Your Home (ISBN 0-9674759-3-7), for great information on "operating" a home. The book is available at [www.amazon.com](http://www.amazon.com) or through Tom at: [www.howtooperateyourhome.com](http://www.howtooperateyourhome.com) or [www.htoyh.com](http://www.htoyh.com), 262-786-7878.



P001



A004